

# BULLETIN 1

---

## 42. Memorial "Cika Dusko Jovanovic"

---

### THREE ORIENTEERING RACES 12.05. - 14.05.2023.

12.05.2023.

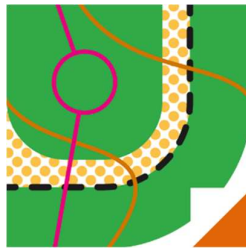
Belgrade - Mirijevo - WRE race - sprint distance and 4. round of Serbian Sprint league

13.05.2023.

Bela reka - Despotovac - Serbian Championship - middle distance

14.05.2023.

Bela reka - Despotovac - WRE race and Serbian League, 4. round - long distance



**Organizer:** Mountaineering-sports club "Pobeda", Belgrade  
**Information:** <http://www.pdpobeda.rs/orijentiring/memorial/>  
**IOF consultant:** Vujadin Žagar  
**Event director:** Snežana Todosić, +381 64 8826 804, 069 62 319 250  
**Track planner:** Bojan Komarčević, Dejan Nikolić, Srđan Marković  
**National controller:** Vujadin Žagar

### Categories:

**Women:** 12, 14, 16, 18, 20, 21E, 21A, 21B, 35, 45, 55, 65, 70.  
**Men:** 12, 14, 16, 18, 20, 21E, 21A, 21B, 35, 45, 55, 65, 70.  
**Open-B, Open-C**  
**Children:** D7 (under 7 years old), D10 (7 to 10-year-olds)

On the second day of competition - Serbian Championship, there will only be one elite category for women and one elite category for men (W21 and M21), so categories W/M21A and W/M21B will not be available.

In case of insufficient applications within a category on the first and third competition days, the organizer keeps the right to join categories.

### Registration and scoring:

<http://oris.orientiring.rs/takmicenja.php>  
[OrienteeingOnline.net](http://OrienteeingOnline.net)  
[snezanat@gmail.com](mailto:snezanat@gmail.com)

It is mandatory that competitors of the elite categories for the WRE race are registered at IOF website via IOF Eventor.

The second and third competition days will be scored for the 42. Memorial awards. First three places in the W/M categories of the first and the second competition days as well as first three places in the W/M categories of the 42. Memorial will be awarded with medals. First six places in the W/M categories for the WRE race will be awarded with diplomas, and first three places in W/M categories will be awarded with medals. The best competitors will also be awarded with special prizes.

---

### Fees per competition days:

- W/M 12, 14, 16: 5 eur first day, 5 eur second day, 5 eur third day
- Open B and C: 5 eur first day, 5 eur second day, 5 eur third day
- W/M 65, 70: 5 eur first day, 5 eur second day, 5 eur third day
- Other categories: 5 eur first day, 5 eur second day, 10 eur third day
- W/M 7, 10: free

---

### Payments:

Registrations should be made until May 09, 2023. at 24:00. After this date, the fees will be 50% higher. Payment will be possible in the event center.

---

The SPORTident punching system will be used in all races. SI card rental will be possible at the event center, 200 RSD per day for one card.

## Event center and terrain description

### 1. Day (May 12th) - Belgrade - Mirijevo:

**WRE race and Serbian Sprint league, 4. round**

Map 1:4000 and 1:3000/ e 2,5 m, march/april 2023.

start: 18:00

Event center in Mirijevo, Belgrade municipality, location 44° 47'31.1"N 20° 31'46.8" E

Near by the Post Office and Elementary School „Despot Stefan Lazarević“.

Working hours of CC will be 16:30 to 17:30.

Quarantine will start at 17:30 p.m.

Urban terrain with a lot of buildings, greenery, partly mildly wavy.  
The terrain is technically challenging and very suitable for orienteering.  
More details will be published in the next bulletin.

### 2. Day (May 13th) - Bela reka:

**Serbian Championship, 4. round, middle distance**

Map 1:10000 and 1:7500/ e 5 m, march/april 2023.

start: 11:00

Event center will be at the Bela Reka farm 44° 12'06.0"N 21° 30'38.0"E

The terrain has plenty of land details, trenches, depressions and small hilltops, some areas are rocky with smaller and larger rocky details, mostly afforested (oak, beech and fir). Low-growing plants in some areas could make running difficult. The terrain is very suitable for orienteering. More details will be published in the next bulletin.

### 3. Day (May 14th) - Bela reka:

**WRE race and Serbian League, 4. round, long distance**

Map 1:15000 and 1:10000/ e 5 m, march/april 2023.

start: 10:00

Event center will be at the Bela Reka farm 44° 12'06.0"N 21° 30'38.0"E

The terrain has plenty of land details, trenches, depressions and small hilltops, some areas are rocky with smaller and larger rocky details, mostly afforested (oak, beech and fir). Low-growing plants in some areas could make running difficult. The terrain is very suitable for orienteering. More details will be published in the next bulletin

### How to get to the event center:

**First day:** Public transport.

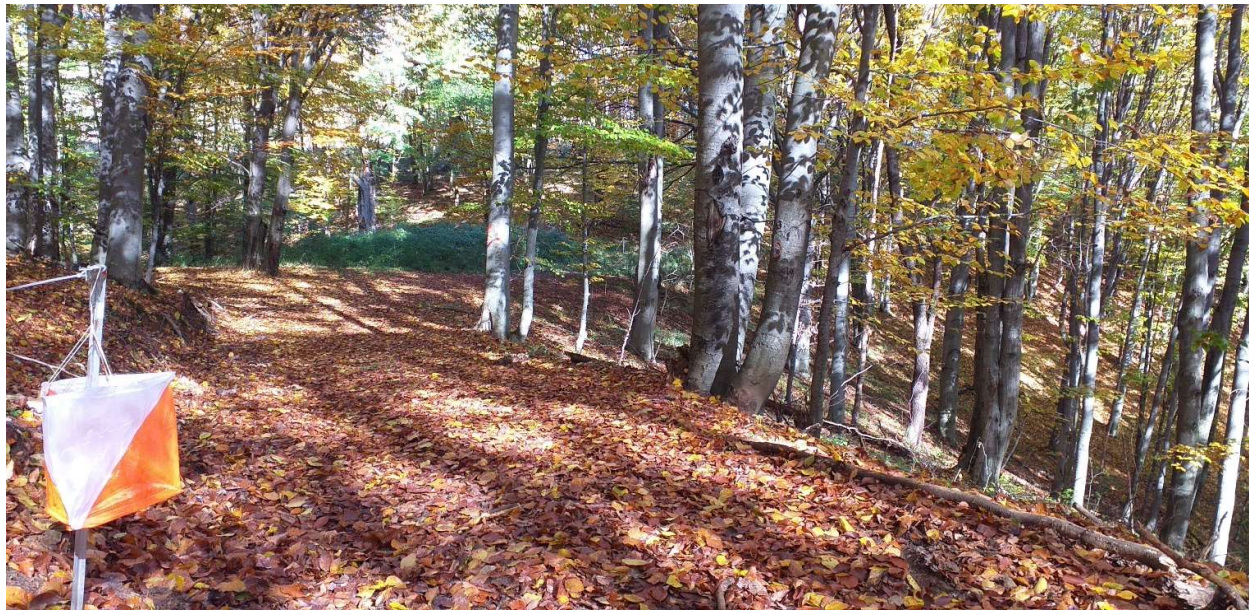
**Second and third day:** You can get to the competition center by car or bus by an asphalt road that goes for 12 km from Despotovac, via villages Lipovica and Bliznak, and is then followed by 6 km of macadam road.

Parking area will be near the finish area and marked visibly.

Transport from Belgrade to the event center in Bela reka and back will be provided by the organizer in case sufficient number of competitors applies for it. Departure is planned to be in the morning hours of May 13<sup>th</sup>, 2023. and return in the evening of May 14<sup>th</sup>.

Event center on the second and third day: 44° 12'06.0"N 21° 30'38.0"E

[Interactive map of the Bela reka event center](#)



---

## Special notes for the 42. Memorial

---

1. It will be possible to follow the results of the races online - <https://liveresultat.orientering.se/>
2. After the competition, maps and routes will be posted to [www.livelox.com](http://www.livelox.com)
3. Race analysis will be posted on Facebook group Orijentiring Srbija after every race.
4. Participants should save their GPX files and register to Livelox app.

---

**Each athlete participates in the event at their own risk!**  
**Come and orient yourself to orienteering!**

---



---

## Media that supports 42. Memorial

---

Sportski Zurnal, Radio Beograd Prvi program, Radio Beograd 202, RTV Strela, Info-media of Despotovac and Žagubica

---

## Friends of 42. Memorial

---



---

## Accommodation for the 42. Memorial

---

<p><b>1. Household Trailovic Dragan</b> Distance from the competition center is 4,5 km, Lipovica village. Two double-bed rooms - a total of 20 beds. 2. Contact information: 035 636 120, 069 636 120, <a href="mailto:trailo076@gmail.com">trailo076@gmail.com</a></p>
<p><b>2. Krupajsko Vrelo</b> Distance from the competition center is 12 km, Krupaja village. Three triple and three double bedrooms (two bathrooms with toilets) - a total of 15 beds. Contact information: 012 641 041, 062 827 8339, <a href="http://www.krupajskovrelo.com/">http://www.krupajskovrelo.com/</a></p>
<p><b>3. Household Zvonko Milenkovic</b> Distance from the competition center is 12 km, Panjevac village. Three triple-bed rooms, two double-bed rooms, one bedroom with 4 beds (each room has its own bathroom and toilet) - a total of 17 beds. Contact information: 063 807 2679, 065 807 2679, <a href="mailto:pvcaluplan@yahoo.com">pvcaluplan@yahoo.com</a></p>
<p><b>4. Household Davidovic Relja (Vacation house 'Davidovic')</b> Distance from the competition center is 18 km, at Despotovac (on the road to Resava cave). An apartment at ground floor (two rooms) with 5 beds (a double bed plus a three-seater sofa plus one bed), a kitchen and a bathroom. A 'studio' upstairs with three beds (a double bed plus one bed) has a separate entrance, a kitchen and a bathroom. A total of 8 beds. Contact information: 064 364 3096, 035 612 365, <a href="http://www.poslovnisvet.com/firma/kuca-za-odmor-davidovic-despotovac-51">http://www.poslovnisvet.com/firma/kuca-za-odmor-davidovic-despotovac-51</a></p>
<p><b>5. 'Panorama' restaurant</b> Distance from the competition center is 8 km, Lomnica village. One triple and six double bedrooms (each room has its own bathroom) - a total of 15 beds. Contact information: 063 852 0558 (Zvonko)</p>
<p><b>6. 'Zlatna musmula' restaurant</b> One 4-bed and one triple bedroom Contact information: 069 3300 890 Boza <a href="mailto:Preso981@gmail.com">Preso981@gmail.com</a>, Instagram: restoranzlatnamusmula</p>
<p><b>7. Free accommodation in your own tents in the vicinity of the event center is possible with prior notice to the organizer.</b></p>